



Scientific Journal of the Observatory of Mediterranean Basin.

Polis University / Ferrara University /

UNECE Center of excellence / Co-PLAN Institute.

TITLE:

**THE HIDDEN REGIONAL LAYER:
LOST ARCHITECTURE/URBANISM**

AUTHOR:

Besnik ALIAJ, Sotir DHAMO, Elvan DAJKO, Ledian BREGASI

SOURCE:

*Scientific journal of the Observatory of Mediterranean Basin,
Volume 1 / 2015, pp. 164-179*

ISSN:

2959-4081

ISBN:

978-9928-175-52-6

PUBLISHED BY:

POLIS-Press

6.1 THE HIDDEN REGIONAL LAYER: LOST ARCHITECTURE/URBANISM

Don't glorify, but don't forget the past!

“Building up a touristic product as a historic layer of Capital Region as well as a cultural-natural itinerary of the Dajti-Adriatic Regional Park”

**Besnik Aliaj, Sotir Dhamo, Elvan Dajko, Ledian Bregasi
& Urban Design Studio**

Polis University, Tirana Albania

Albania and especially its capital—Tirana—has a wealth of assets inherited for its communist past. Many housing and administrative buildings, as well as a network of bunkers of all kinds and sizes, including war museums, socialist art galleries, the dictator's mausoleum, cemeteries and other symbols of the communist regime despite being neglected, maltreated or destroyed during last two decades, have always attracted the attention of foreign visitors. The attention paid to such a typology of art, architecture and urbanism called “Lost Architecture” is increasingly growing, but the point is how to do it?

Indeed, this has been steering tough and long politicized public debates further fueled by politics of the day. Of course, the point is to respect victims (and families) of past dictatorship; avoid glorification of the past, while using the remaining assets and heritage for economic purposes and growth of tourism. The point is evidencing the megalomania and craziness of the past regime, and further create an alternative cultural itinerary throughout three main steps: i) the heavy bunker shelters and military installments of the Dajti mountain area; ii) the communist architecture mainly located in the city center (including a few residential housing blocks; the National History Museum, the ‘Pyramid’ or ex-museum of the dictator;

the politburo residential area in downtown Tirana otherwise known as the “Block”, etc; iii) the network of bunkers and military installments spread along rural-agricultural territory and on the coastal area of the Tirana-Durres Corridor.

The concept is briefly represented below by few images of the Polis University's projects over the last 5 years according to a regional strategy that is mixing such a layer with the layer of Dajti-Adriatic regional park theme, which includes the ‘green crown’ of Tirana - a huge green planting project during the communist era— that still remains a useful ‘green lungs’ for the Tirana region and must be further reinforced by the itinerary of pedestrian paths along hills. There are several belvedere and panoramic balconies up in the hills which can be used to hike, ride bikes, walk, and run or spend health-oriented weekends there. This project is also emphasized by the layer of rivers and creeks which can be carefully refurbished and maintained not only environmentally speaking but also as a new infrastructure for pedestrian culture in Albania. All these elements along with the previous projects introduced in this book, show how authorities can redevelop the Tirana-Airport corridor going beyond superficial interventions, and promoting modern urban-territorial governance.



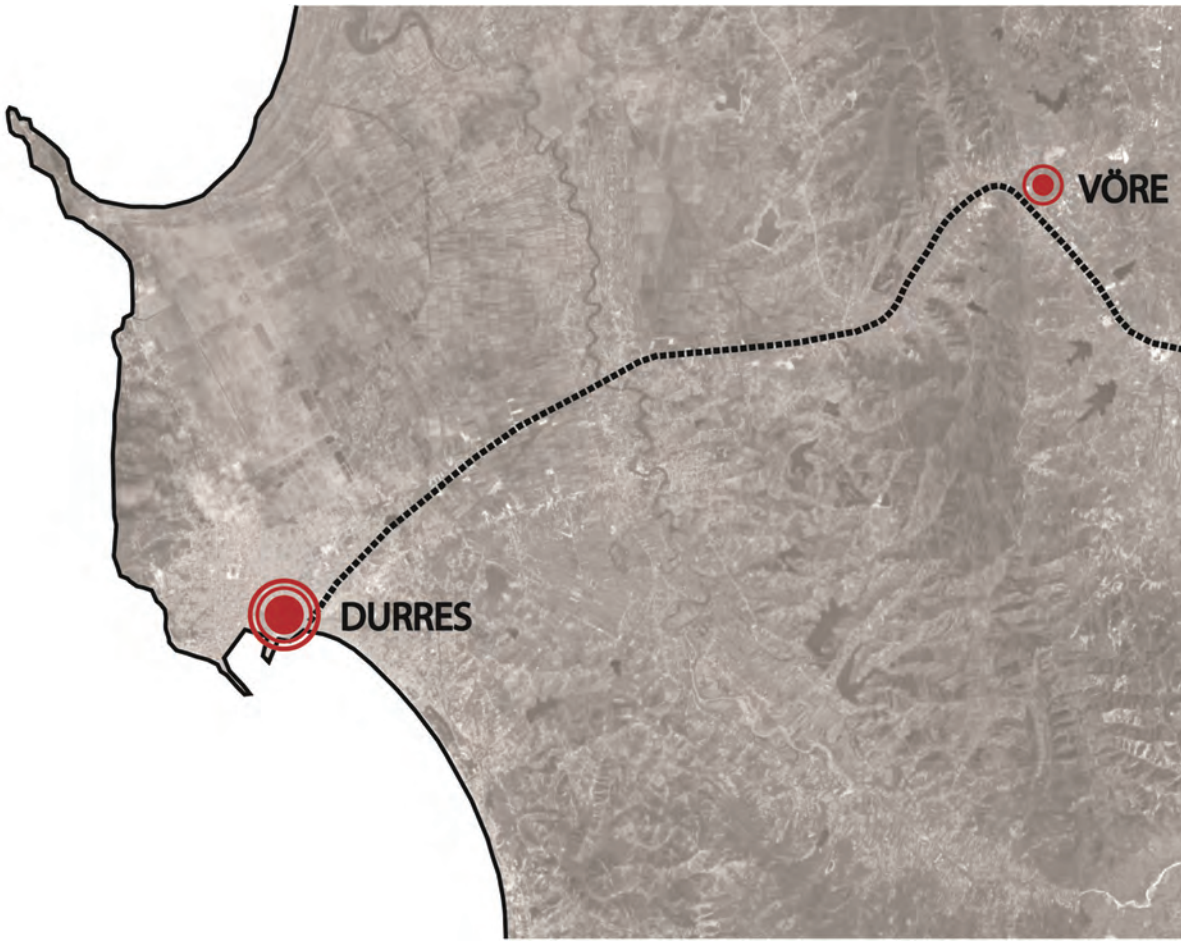
Social tensions in regard with Political Positions to the Past Regime, 2014

POLIS Research Institute

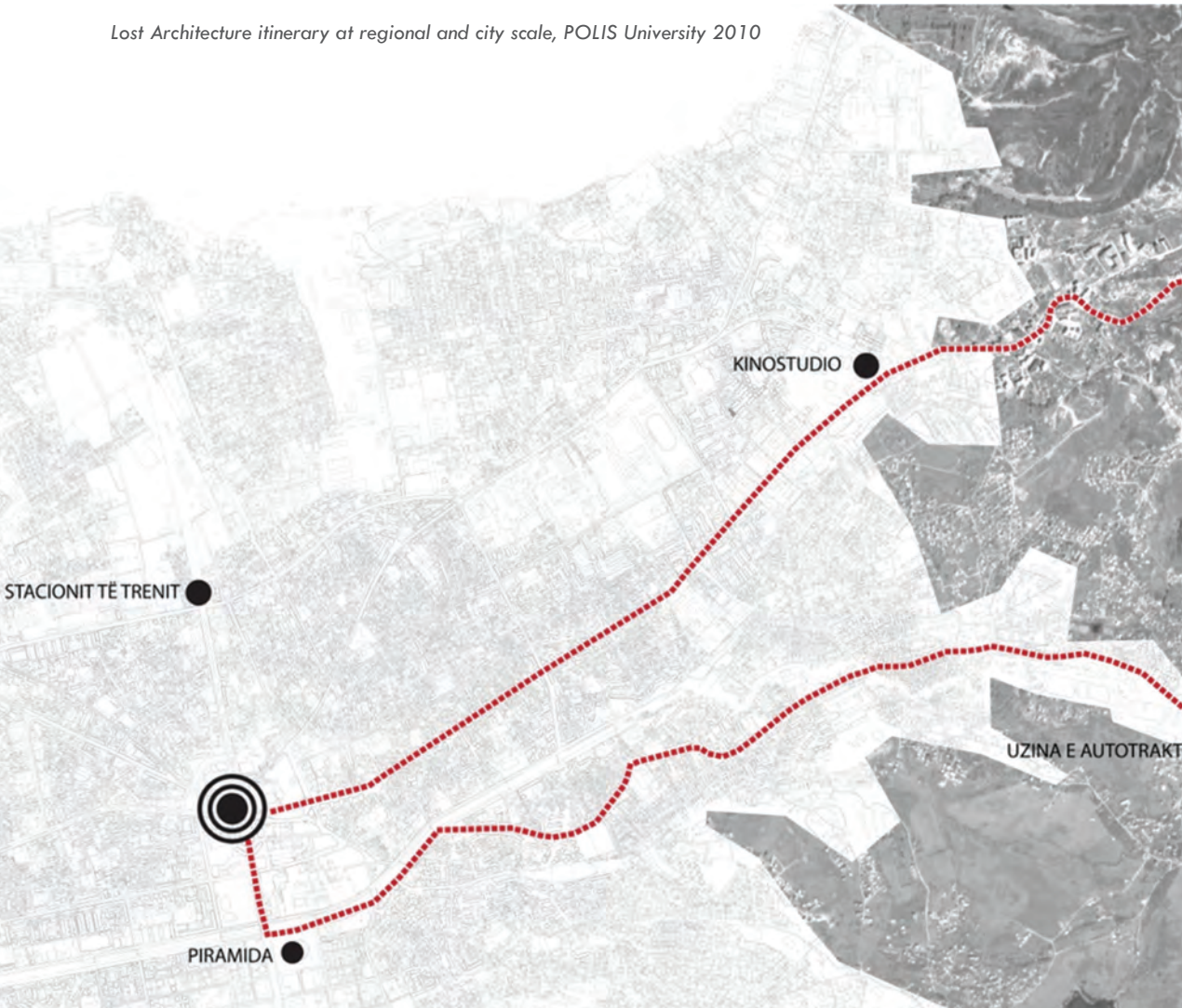
5011

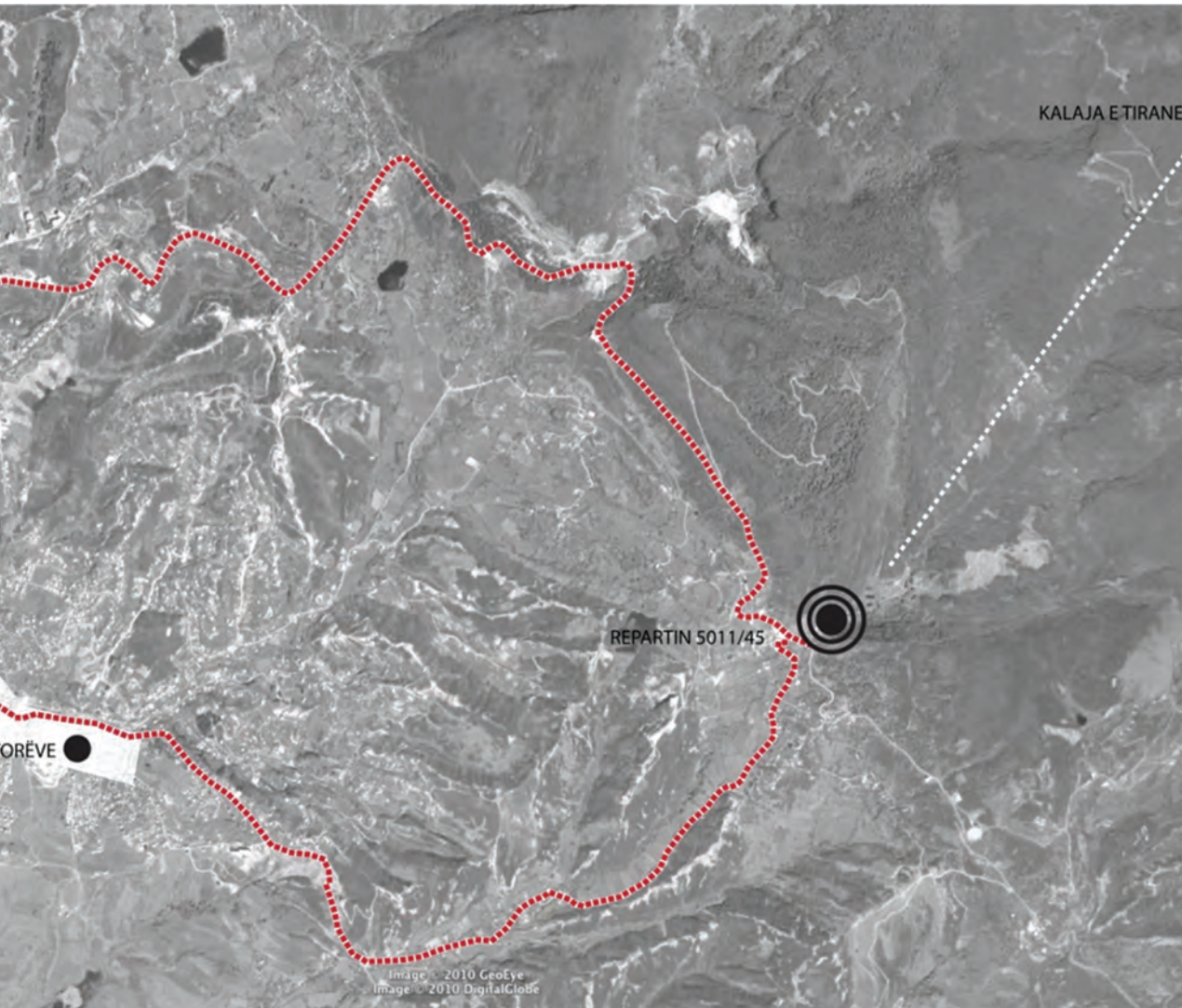
45

Towards a concept for an archive/museum for literature & art of socialist realism in Surrel, Tirana-Albania.



Lost Architecture itinerary at regional and city scale, POLIS University 2010







Museum of Memory and Human Rights of Chile



Jewish Museum Berlin

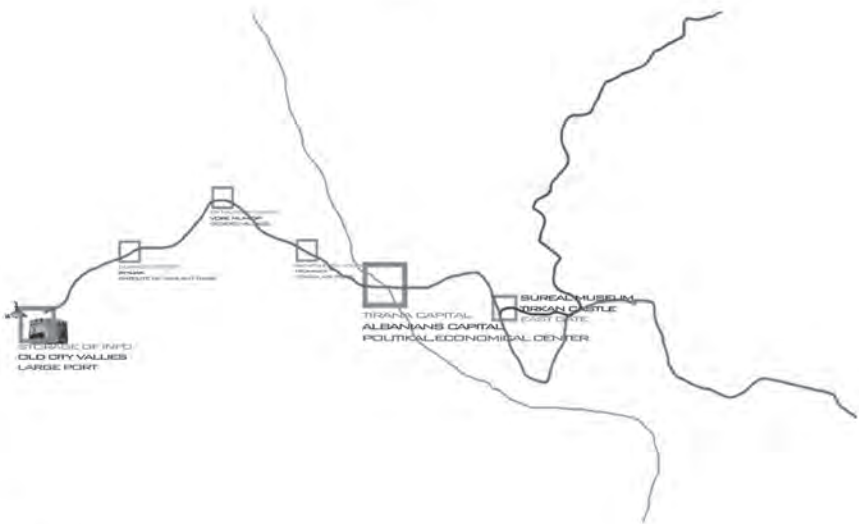
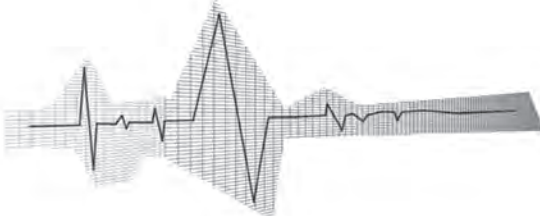
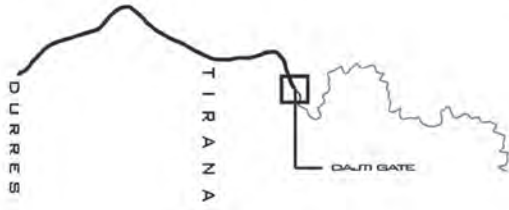
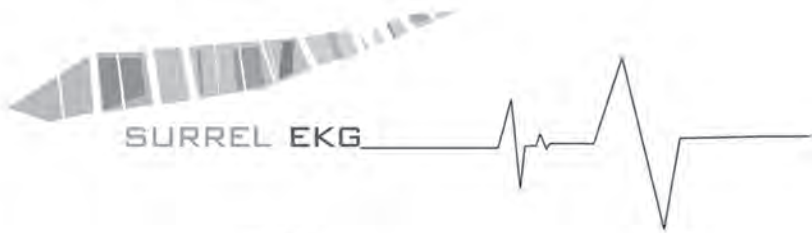


House of Terror, Budapest



Holocaust Memorial, Berlin





Surreal Lost Architecture project, Surrel EKG, Socialist Realism Museum & and Books Archive, POLIS University 2010



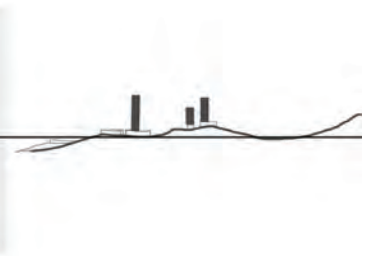
NOT ONLY 17 NOVEMBER 1944



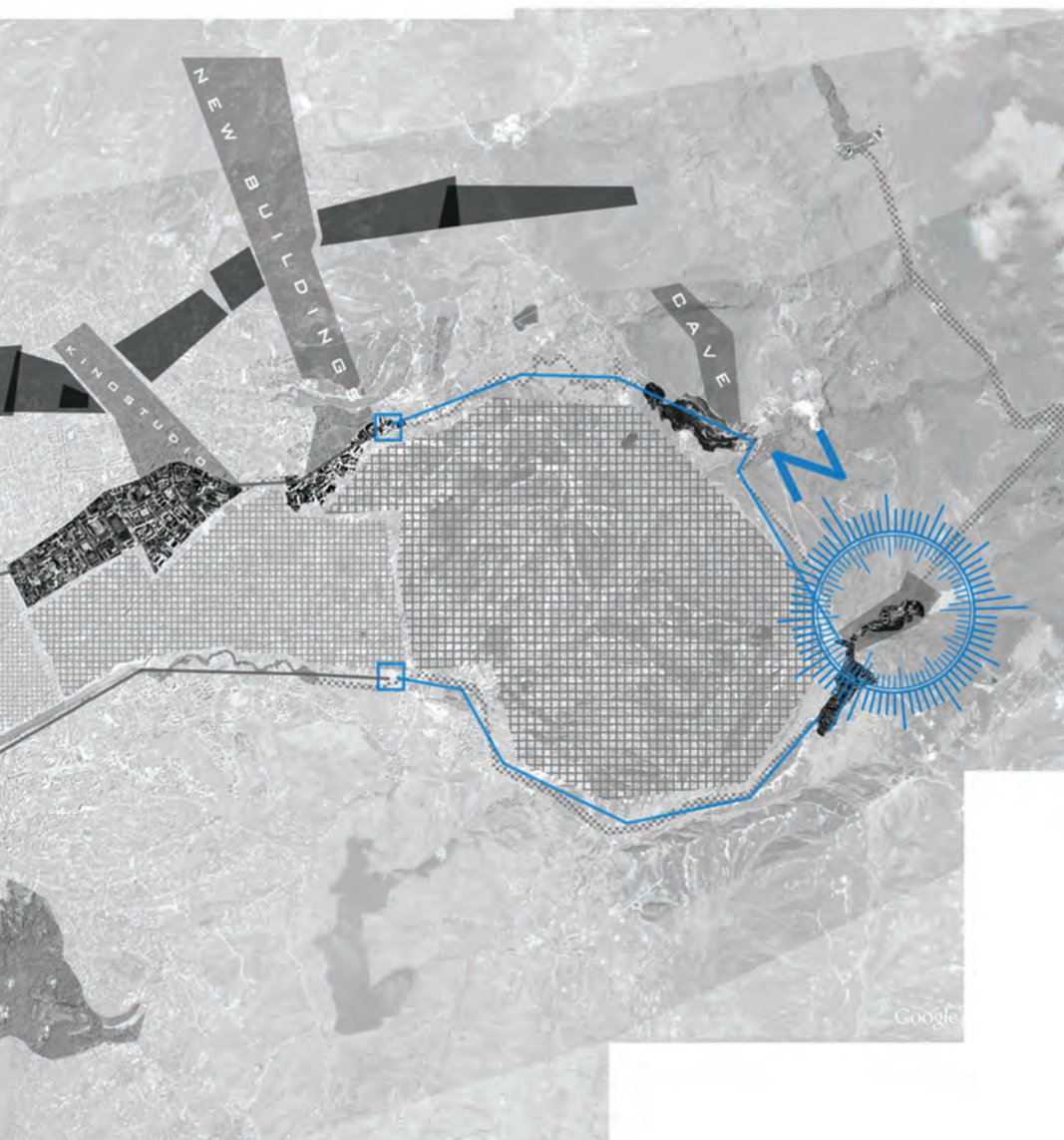
DIFFERENT PERIODS OF TIME THROUGH VERTICALITY



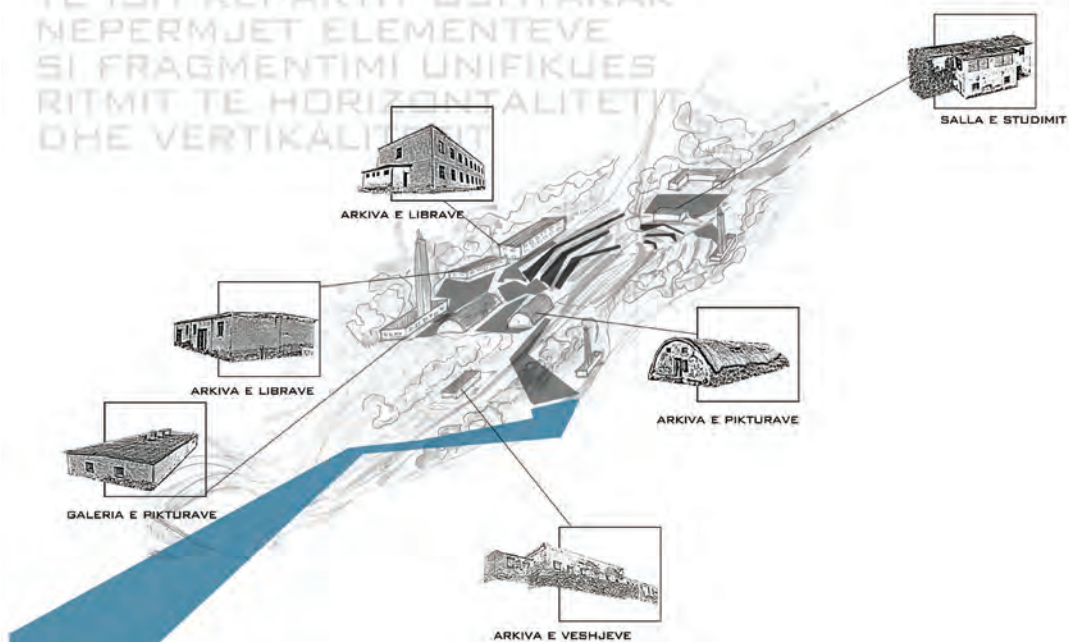
BREAKING THE TIME THROUGH LINES



Surreal Lost Architecture project, Surrel
 EKG, Socialist Realism Museum & and Books
 Archive, POLIS University 2010



KRIJIMI I TENSIONEVE
 PERGJATE AKSIT PERSHKUES
 TE ISH REPARTIT USHTARAK
 NEPERMJET ELEMENTEVE
 SI FRAGMENTIMI UNIFIKUES
 RITMIT TE HORIZONTALITETIT
 DHE VERTIKALITETIT



STANDBY 5011

PROJEKTI YNE KERKON TE KRIJOJE NJE HAPESIRE QE NUK HASET RENDOM NEPER QYTETE DUKE NDERTHURUR ZYMTESINE E REPARTIT USHTARAK, MREKULLINE E PEJSAZHIT TE ZONES DHE FUNKSIONIT TE KERKUAR EKSPOZUES E ARKIVUES NE NJE KOMPLEKS KU SPIKAT LOJA E KUNDERSHIVE TEKST/ KONTEKST E KU PERJETIMET UDHEZHONEN NGA ITINERARI I SHINAVE I BASHKANGJITUR LAMIERES QE PERSHKON TERRITORIN DUKE SHTUAR PAK SIPERFAQE TE NDERTUARA.

EKSPOZIM
SKULPTUR-
ASH

NE SYNOJME: PERJETIME TE FORTA
PEJSAZH TE LEHTESUAR
REFLEKTIME TE LIRA

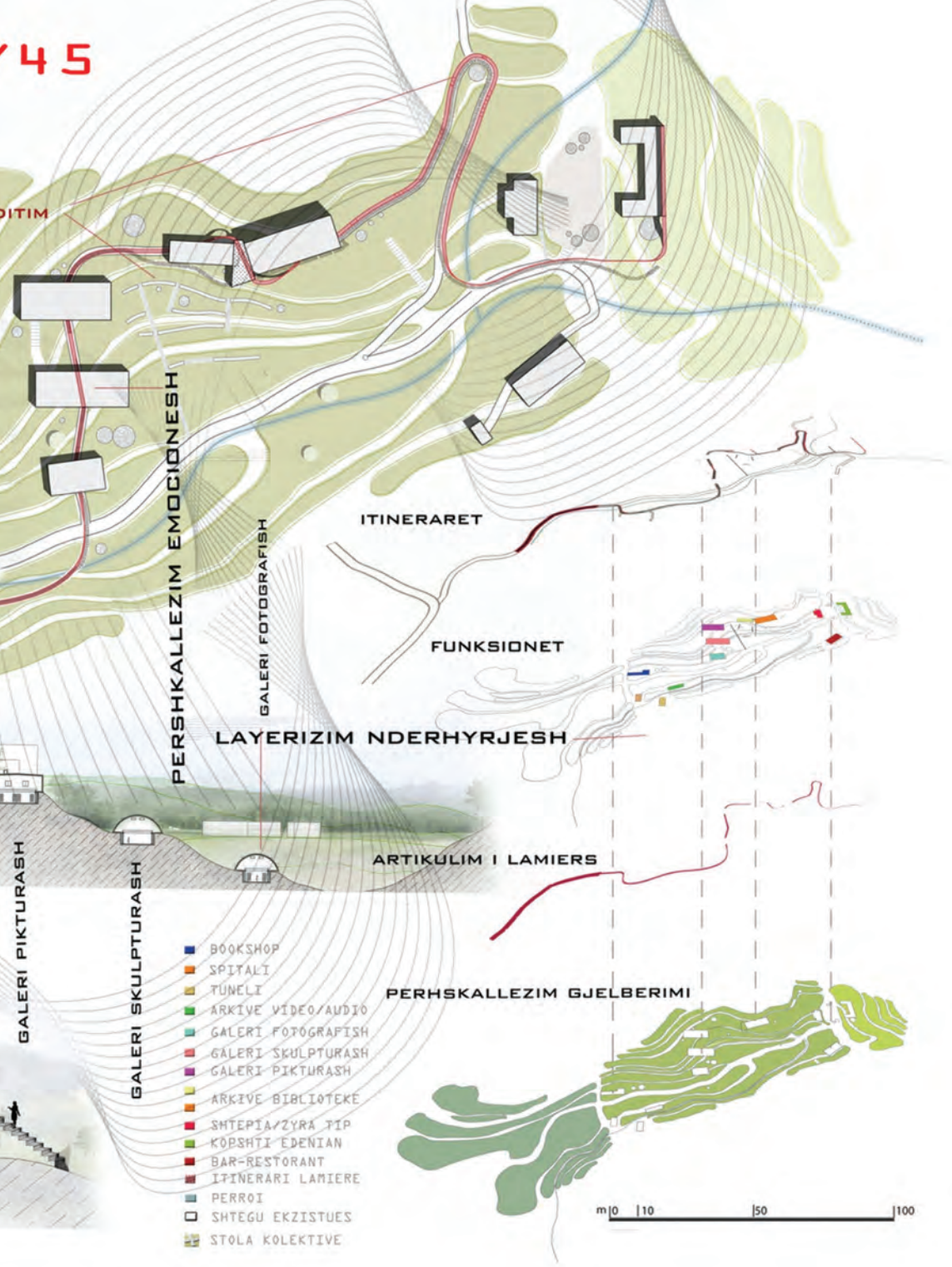
NE RRESHT!!!

CLIRIMI NE LARTESI



Surreal Lost Architecture project, Surrel EKG, Socialist Realism Museum & and Books Archive, POLIS University 2010

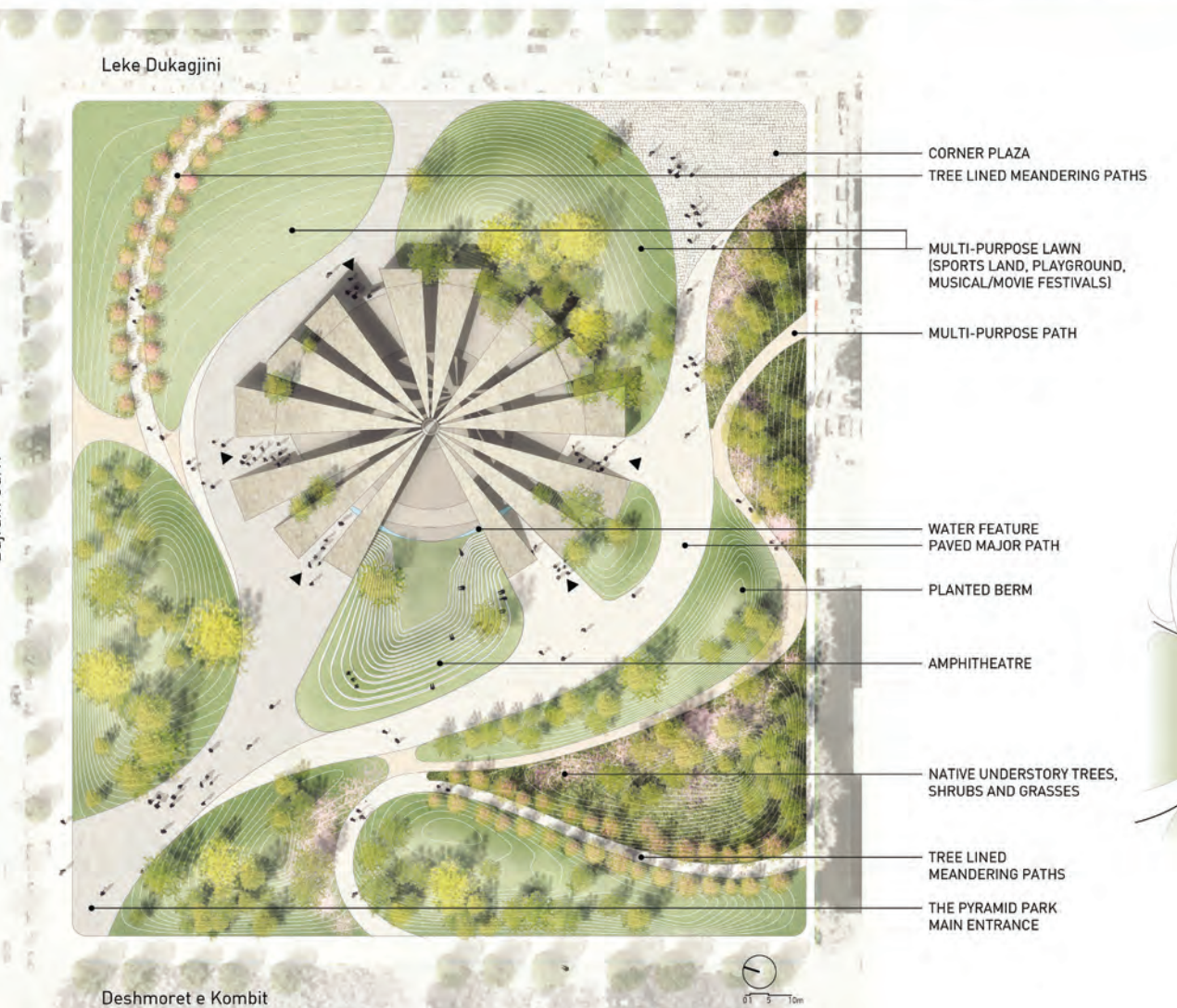




172

173





Winner of International competition for the re-activation of the Pyramid Building and Square, TAW Tirana Architecture Weeks, POLIS University 2014



THE PYRAMID PARK

MWCSO

The site of Pyramid Square as a whole needs an urgent redefinition, which will make it a civic attraction, rejuvenating the city center. The center of Tirana has experienced a successive developments under the impacts of different regimes. It has served as a means of expressing political visions and ideologies. With the political and economic transformations in the past decades, the role of Tirana city center needs to be transformed from a single community serving land to serve public in a multi-functional manner.

The strategy is to open up the Pyramid Square, including the building itself, transforming the symbolic yet solemn site into a welcoming city park – The Pyramid Park. This former exclusive site, a mystical land shrouded with memories, will be redefined as a people's parkland and exposed to public thoroughly in a way to celebrate the new urban lifestyle yet not to forget about the past. With the remarkable built form and historical value, the Pyramid itself will perform to public as a massive sculpture with the existing main structures being completely preserved. With the rearrangement of landscape, the former isolated pyramid will be embraced into a green land. The preserved existing structures will perform both as a sculpture and a multi-function activity center.

DESIGN STRATEGIES



● PRESERVATION OF THE EXISTING MAIN STRUCTURES

With the major structural elements being preserved, the building will be transformed into a massive sculpture embraced by the



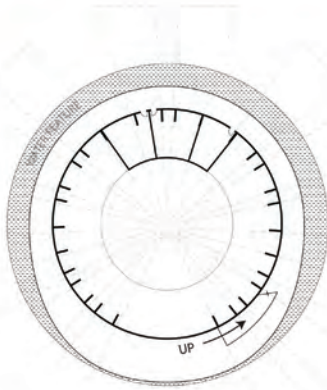
● RE-ARRANGEMENT OF THE LANDSCAPE

The symmetric layout of the plaza and elevated Pyramid created a cold and unfriendly atmosphere. To create spaces more affinity to public, the former rigid lines on site will be replaced with new circulation defined by gentle fluid pathways. The berms with naturalized planting will weaken the condescending feeling associated with the elevated Pyramid. With the landscape flowing into the Pyramid, the tough structure will be soften and properly integrated into the surroundings.

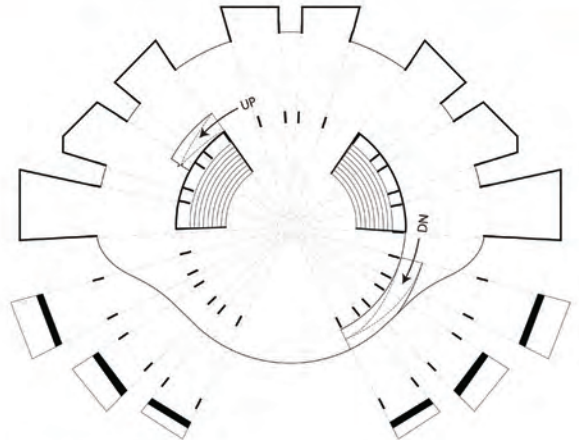
■ LANDSCAPE ARRANGEMENT
 ■ CIRCULATION



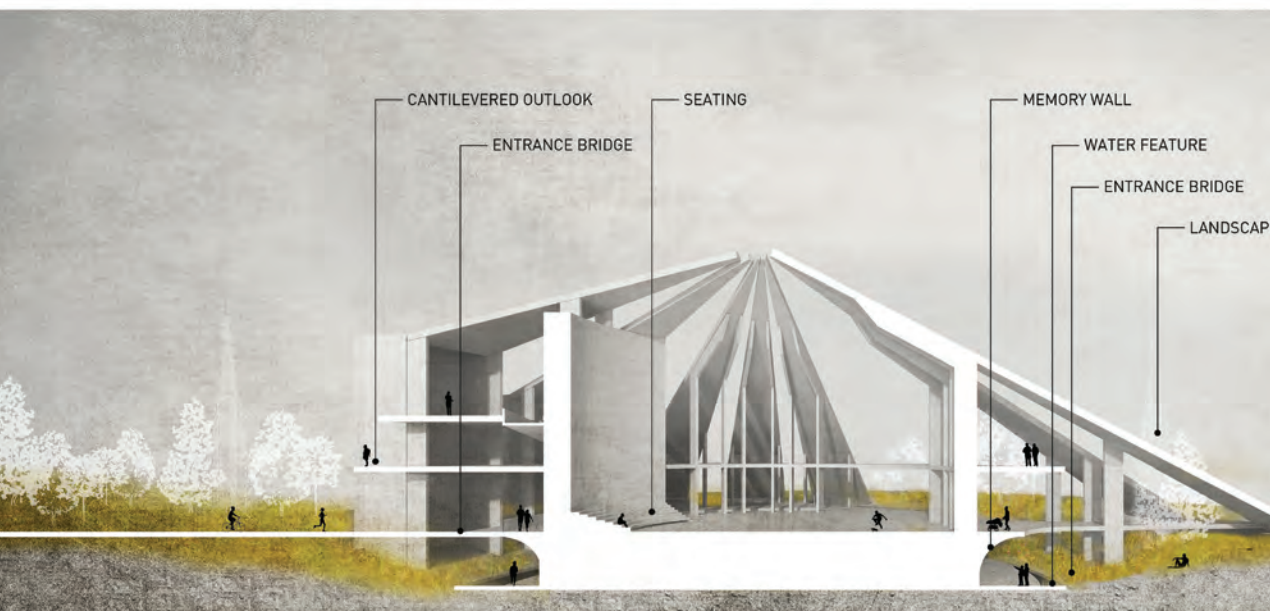
THE PYRAMID PARK FITTING IN THE URBAN FABRIC



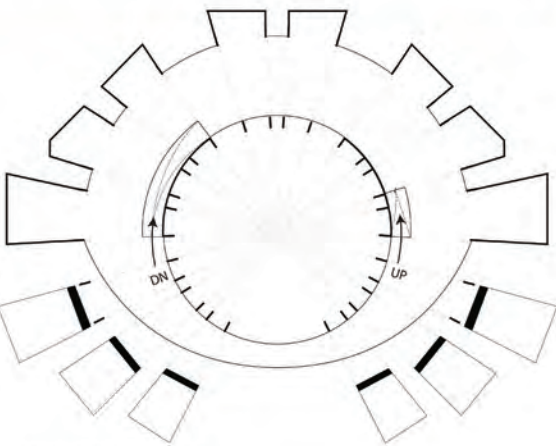
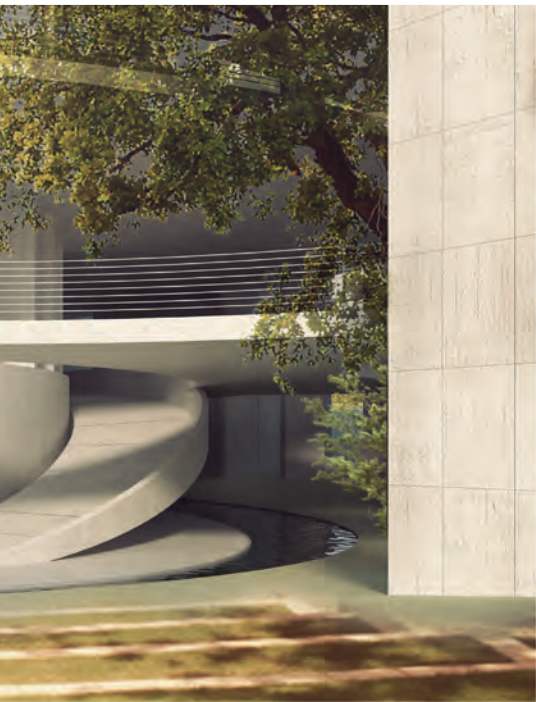
UNDERGROUND FLOOR PLAN 1:500



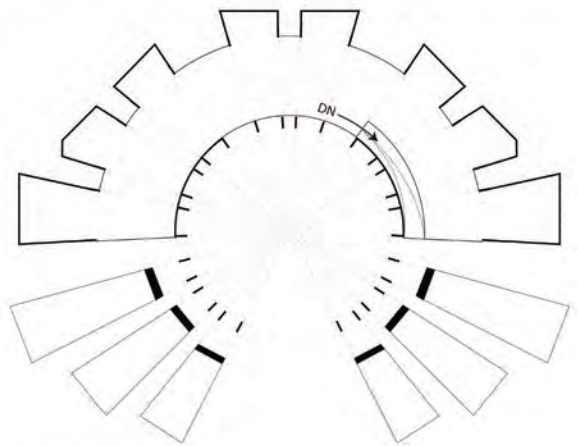
GROUND FLOOR PLAN 1:500



Winner of International competition for the re-activation of the Pyramid Building and Square,
TAW Tirana Architecture Weeks, POLIS University 2014



SECOND FLOOR PLAN 1:500



TOP FLOOR PLAN 1:500



E TO FLOW INTO THE PYRAMID

The underground level of the Pyramid will be exposed and re-defined as a monumental space. With the amphitheater ramping down to the underground level, it can be easily accessed. The ground level will be used as an activity space for the major public gathering. The second and third floor will serve as a multi-purpose space.

The Pyramid Park is a great public destination. From daily uses to special events, the new park will accommodate a variety of activities. The multi-purpose lawn in the park can accommodate events like music festival, outdoor film night, marketing events, and etc. While public speeches, monumental events, exhibitions can be held within the pyramid structure. Open spaces, amphitheater, playground, sports land are programmed into the park for daily uses.

THE PYRAMID PARK



Bed & Bunker Project, Reactivating Bunkers for Tourism Purposes,
POLIS University & Mainz University Germany TAW 2012





178

179

