



**Scientific Journal of the Observatory of Mediterranean Basin.**

Polis University / Ferrara University /

UNECE Center of excellence / Co-PLAN Institute.

**TITLE: GJAKOVA [RE]PACKED Competition report**

**AUTHOR: *Dea Buza, Renis Batalli***

**SOURCE: *Scientific journal of the Observatory of Mediterranean Basin,  
Volume 3 / 2016, pp. 242-251***

**ISSN: *2959-4081***

**ISBN: *978-9928-4459-1-9***

**PUBLISHED BY: *POLIS-Press***

**DOI: *10.37199/o41003124***

# GJAKOVA [RE]PACKED

## Competition report

IF / Innovation Factory

242

**project leaders** / Dea Buza, Renis Batalli

**collaborators** / Eranda Janku, Pegi Shima, Perla Qordja

Dissolving the city in all its elements and re-packing everything again by empowering physical and cultural potentials, social structures and economic drivers: designing an architectural toolkit, as a method for promoting resilience and sustainable development.

### Repacking the city

The economic crisis, and now recently even the social crisis (exodus) is evident, and it's not only a local issue. It has many layers and it's putting to question a lot of models, which we have built and we follow nowadays. In order to get conscious and redevelop economy and society, we need to start understanding the problem and give answers to it, not only globally, but especially locally, providing employment, better living conditions and equality.

"Gjakova Repacked" starts with the re-conceptualization of the functional layers of Gjakova, setting a priority-frame and then focusing on the project area, as the area, where all potentials derive and accumulate. Redeveloping this core area becomes not only the aim of the project, but we believe that once this core area is re-developed, it can be a good model to replicate and it can stimulate development in the rest of the city.

We put to use all the potentials that we found: natural assets, religious tolerance, rich history and traditions, by creating a framework on which they can integrate, cope and act as catalysts for promoting

economic development. By creating opportunities for promotion, employment and public involvement we aim to make people the main key-actors of the manifestation of these potentials, and of this development framework.

### Concept / Connect physical component

Use the main economic roads that border the project area for implementing the Smaller Ring Road of Gjakova, an area where all the main industrial and trading activities will be based, and where the main vehicular circulation will function. Three main connecting routes will connect each side of the ring road and will make possible the entrances within the project area. Only these roads will be open for car access and main traffic circulation, promoting a car-free area within the project site. Implementing this infrastructural concept, asks for the arrangement of parking spaces as well. There are 7 main nodes that contour the site and the ring road, and these spots are also the main key areas for accommodating parking spaces, preferably vertical parking to efficiently use the land. Once the issue of parking is solved, pedestrian and cycling movement will be easier to implement within the ring road.

Using the space along the river flow and designing more frequent links and bridges for linking the two parts of the city is also one way of promoting a better connection.

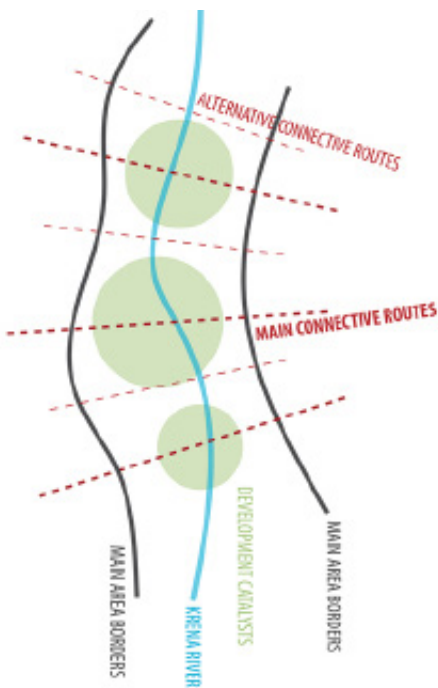


Fig1 / Concept schemes source / competition panels



244

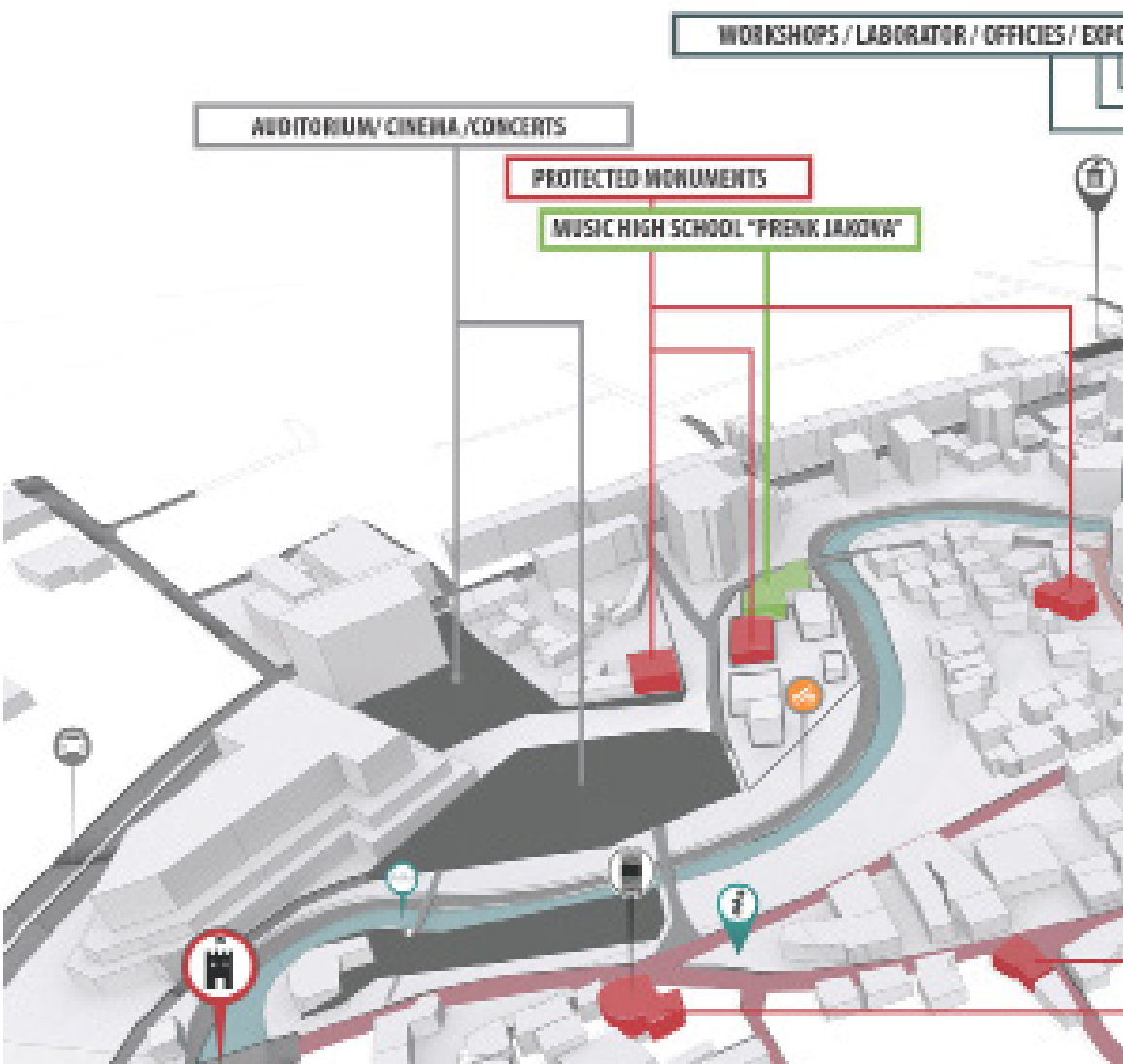




Fig2 / Areal view and functional layout  
source / competition panels

A continuous green pedestrian and cycling route is proposed along the river, creating a linear park, which stands beside the built, co-exists with it and complements it.

### **Concept / Infill process**

Although because of its history, many layers represent the city of Gjakova today, the city hasn't still been built aggressively and there are many potential spaces (either built, or not) to be used within the city, and especially within the project area. We cannot prevent development and building, so we have to find a common ground for preserving the historic city while creating space for new developments.

We identified three main potential areas, which we consider as catalysts for the redevelopment of the city. Each area is organized around a main activity or important object, which we consider on our proposal for redefining the identity of the city:

- The Cultural Hub (Area No.1- Music High School District);
- The Smart District (Area No.2- Incubators' District);
- The Linear Park (Area No.3- Riverside Elementary School District).

The nowadays economic and social crisis need new approaches towards what we call tools for development. It is time we think and invest more on participatory processes, which are able to bring and ensure development that adapts to the people's needs and capacities, in front of limited resources, unemployment and scarce land.

### **Concept / Activate by Design**

We aim to redevelop the area and beyond that the city, by tailoring a functional program, which links and creates a series of events and activities that happen in the city, activating social structures, economic drivers and physical spaces.

In order to make space for new developments, we conceptualize and design a special toolkit, which adapts to specific activities and functions. The toolkit works on a modular basis and can be easily produced in Gjakova, using traditional handcrafting techniques and local materials like metal and wood. The structures permanently settle on specific locations, but the size of the implementation changes on time based on citizen's needs and capacities, being able to cope with any context, or situation. The toolkit is not only able to settle and implement on open empty areas, but it can also cope with existing structures (used, or unused).

## **Interventions / Repacking and Infilling the 3 main catalysts**

### **The Cultural Hub / Area No.1**

#### **Music High School District**

The Cultural Hub is the new living "art gallery" of Gjakova. It is an agglomeration of spaces dedicated to promoting start-ups for art and culture in the city. The outdoor and indoor auditorium, the concert stage, the outdoor cinema and the pavilions, are spaces created by using modular structures from the toolkit we've designed, and dedicated to the people of Gjakova.

The area integrates with the river as well, creating a park and it's at this point where two important itineraries start and continue as the river flows towards the other part of the city: the pedestrian pergola and the cycling route. By re-designing the riverbank these two itineraries continue in a linear way along the river, and a series of small bridges and links, connect the two different parts of the city, across the river. Modular structures from the toolkit are used in both cases for re-concerting the use of the river in these different ways.

### **The Smart District / Area No.2**

#### **Incubators' District**

The Smart District is a sustainable district, which develops itself using the actual potentials and builds upon them for the future. The whole district will be used for organizing complementary activities that use the innovative basis and develop further into different activates: workshops, spaces for open lectures-trainings- research laboratories- and other experimental spaces, which will push further the development of economy based on technology, innovation and research. Incorporating spaces for social activities and interactions, will also contribute to building a culture of education based on innovation and technology.

Handicrafts and traditional production ways will be taught and promoted on this area as well. Spaces designed especially for these workshops will be dedicated to learning courses on different topics: wood processing, embroidering, cooking, leather and wool processing; opening the city not only to the locals, but to the whole world. The inhabitants themselves, together with the best professionals will be the main actors to put to work the net of workshops, which will be planned on a daily-weekly- or monthly basis, manifested with fairs and exhibitions for promoting all the production. Local schools and businesses can also be part of the clustering, providing learning practices, work force and products' market. This practice will retain

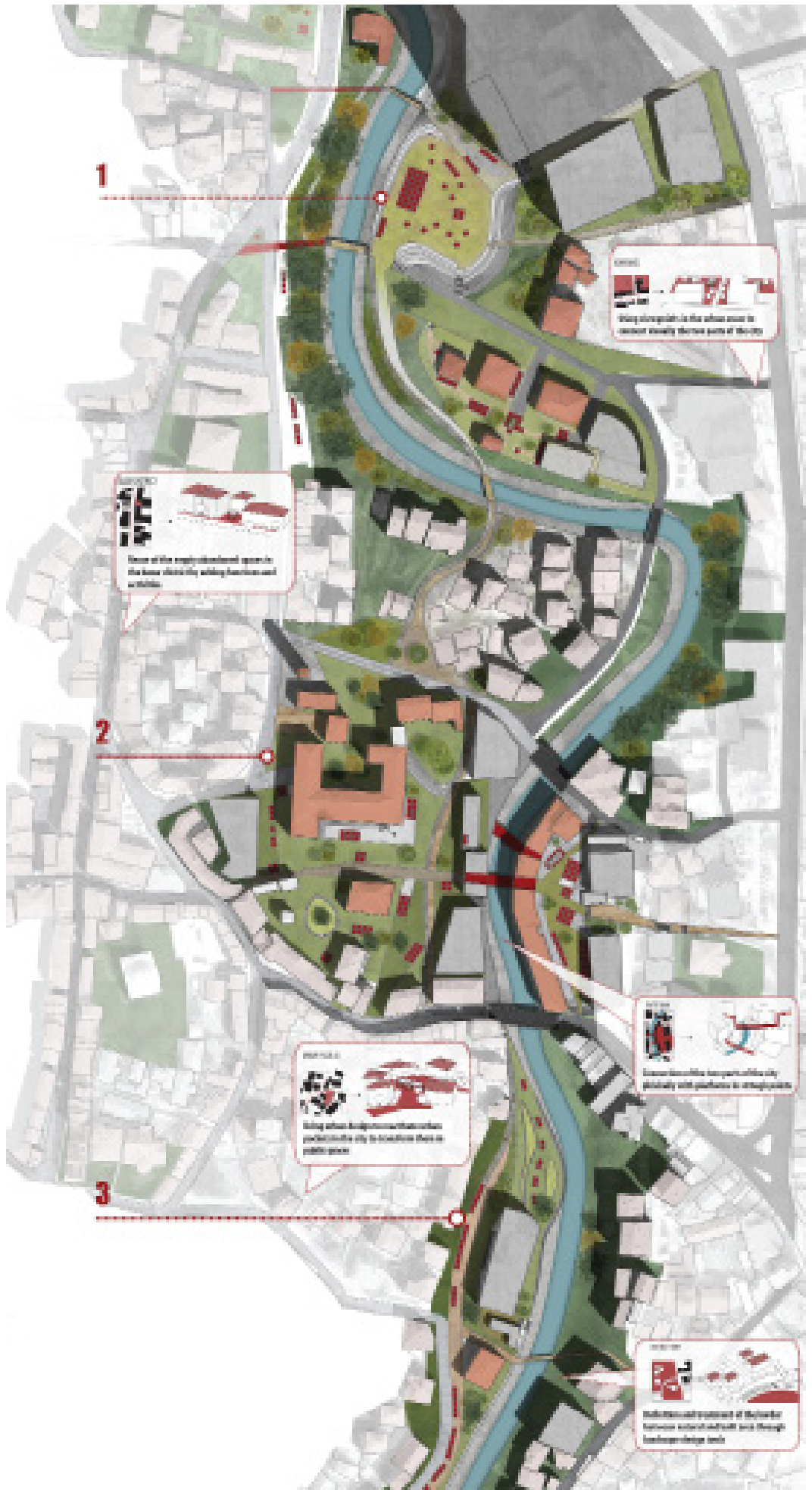
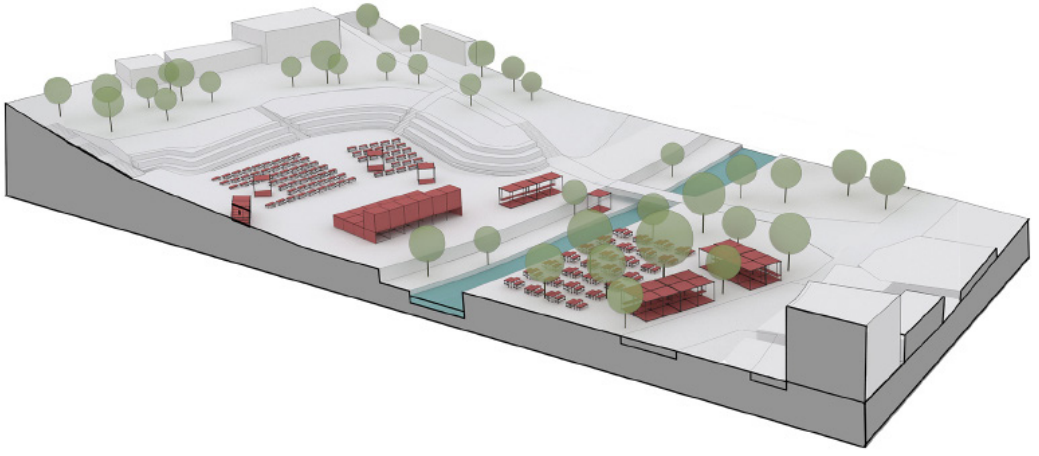


Fig3 / General Masterplan  
source / competition panels



248

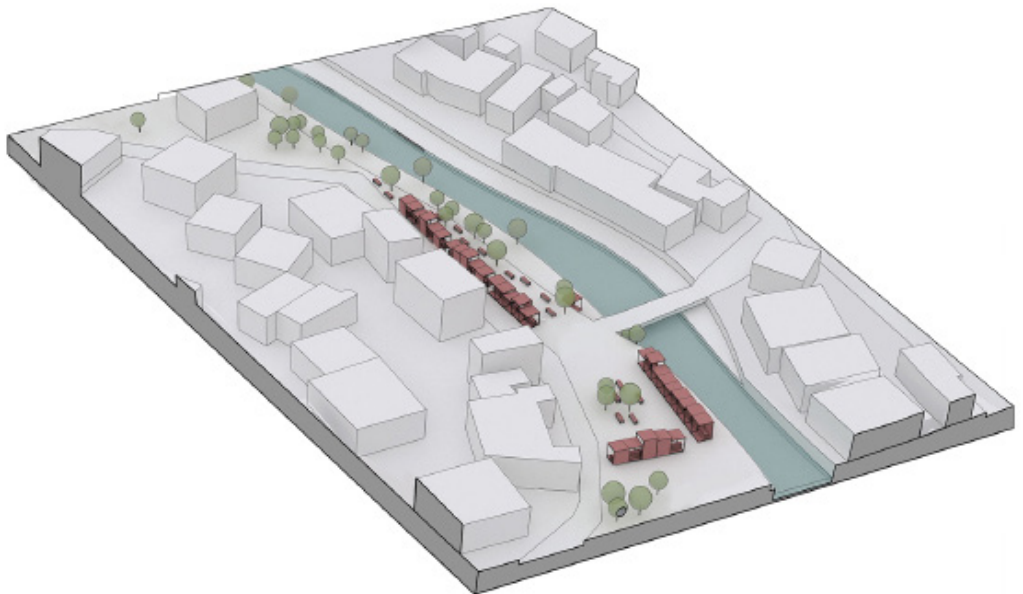
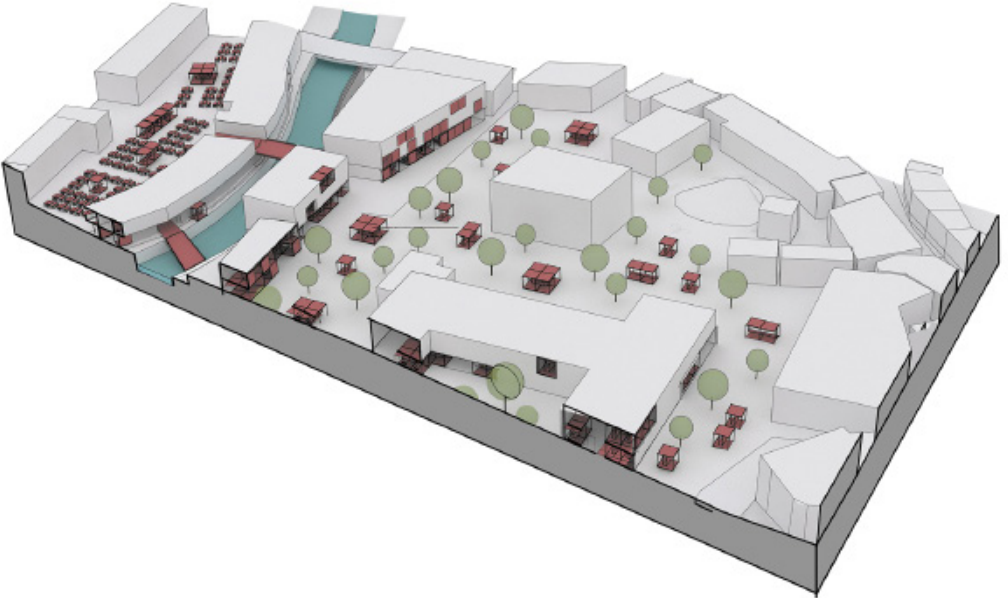


Fig 4 / Zooms axonometries  
source / competition panels





*Fig5 / Project views  
source / competition panels*

and sustain the traditional production and processing of the main local materials on the short and especially on the long run. The district offers several empty unused buildings near the old bazaar, and we use such spaces for implementing different activities. Those empty buildings near the incubator are used as spaces for classrooms, offices, exhibitions; and also bar, hotel, and restaurant. This district will offer dedicated spaces for research and innovative projects for the schools of the city, giving them the chance to grow and develop in the midst of the Smart District. Meanwhile on the other side of the district, embracing the “trading” character of the city, the empty unused buildings will feed the need of the bazaar for more space to use, creating new opportunities for employment and reactivating the social

**The Linear Park / Area No.3  
Riverside Elementary School District**

The Linear Park is a more intimate urban area in order to provide more security for the kids of the elementary school and for the inhabitants of the private homes. We still enhance connections with the rest of the project site and the rest of the city, but the whole area is thought as a linear park along the river, which through landscape interventions creates different atmospheres for different users. The park accommodates the bio-food market as well, which promotes local production of fruits and greens.

# HOW TO BUILD IT

1. FRAME

2. ADD THE SEATING

3. ADD MORE SEATING

4. ADD THE TABLES



# MULTIPLE USES

1. BENCH

2. TABLE

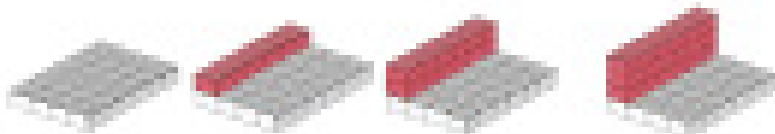


3. SPECIAL PURPOSE

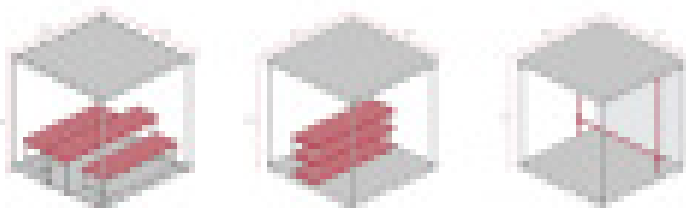
4. BENCH

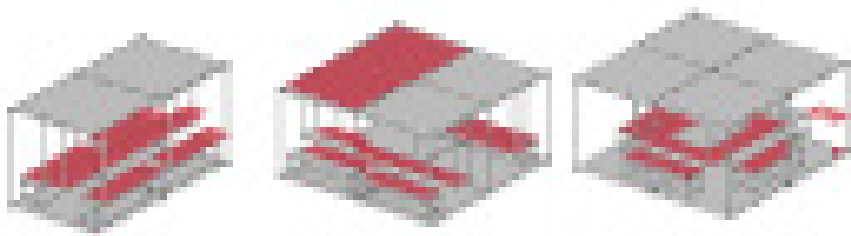
5. TABLE

6. TABLE

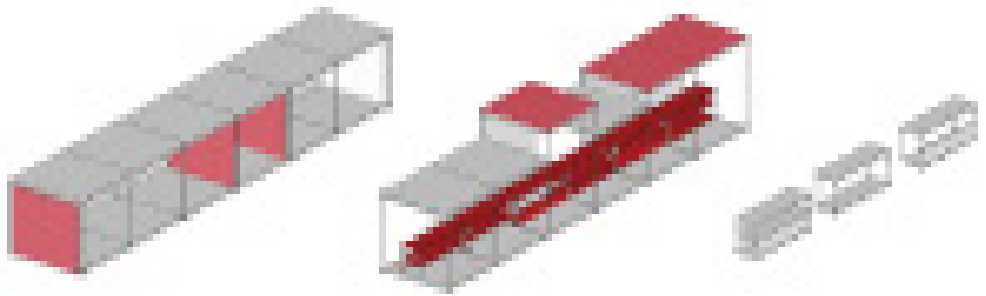


7. BENCH WITH TABLE, BENCH





**3. INITIAL ASSEMBLY**



**4. EXPANDING AND SIDE IDENTIFICATION**

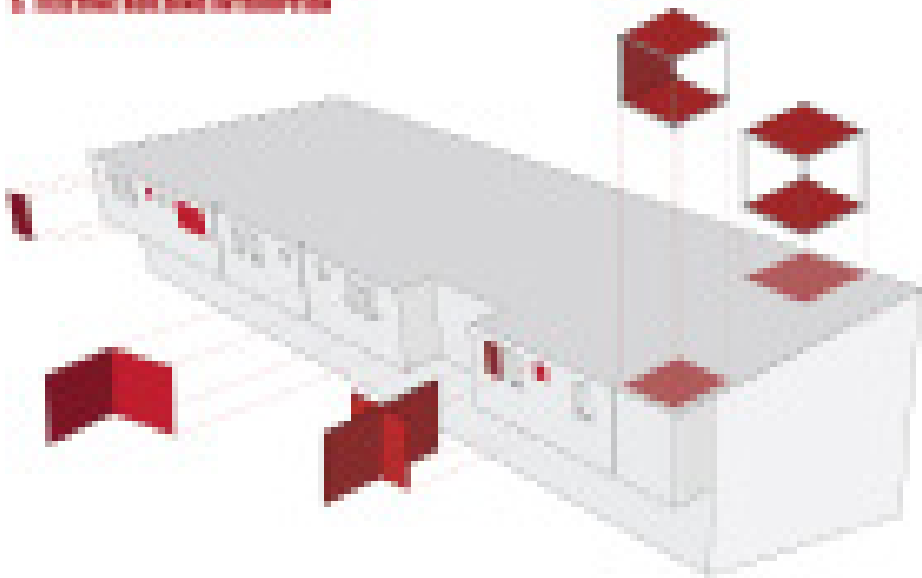


Fig6 / Module building process and view  
source / competition panels